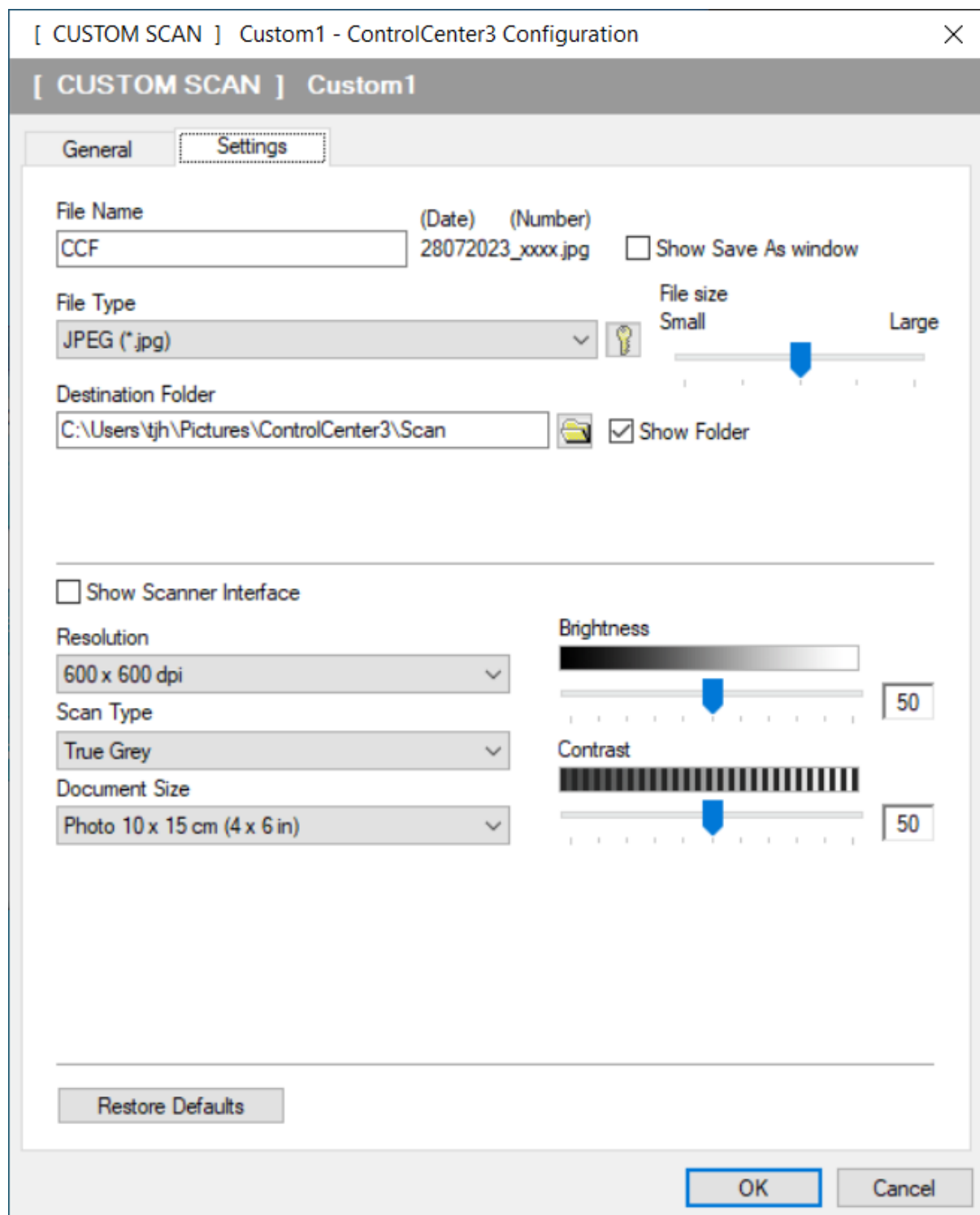


scanning_ar_grey_photos.docx

TJH 19,20,22,28-JUL-23

Scanning grey photos on Brother DCP-197C

see next page



True Grey 375 KB
 Grey (Error Diffusion) 443 KB
 On my screen I can't spot the difference.

https://support.brother.com/g/s/id/html/doc/mfc/cv_mfc8890dw/us/html/sug/chapter9_1_4.html

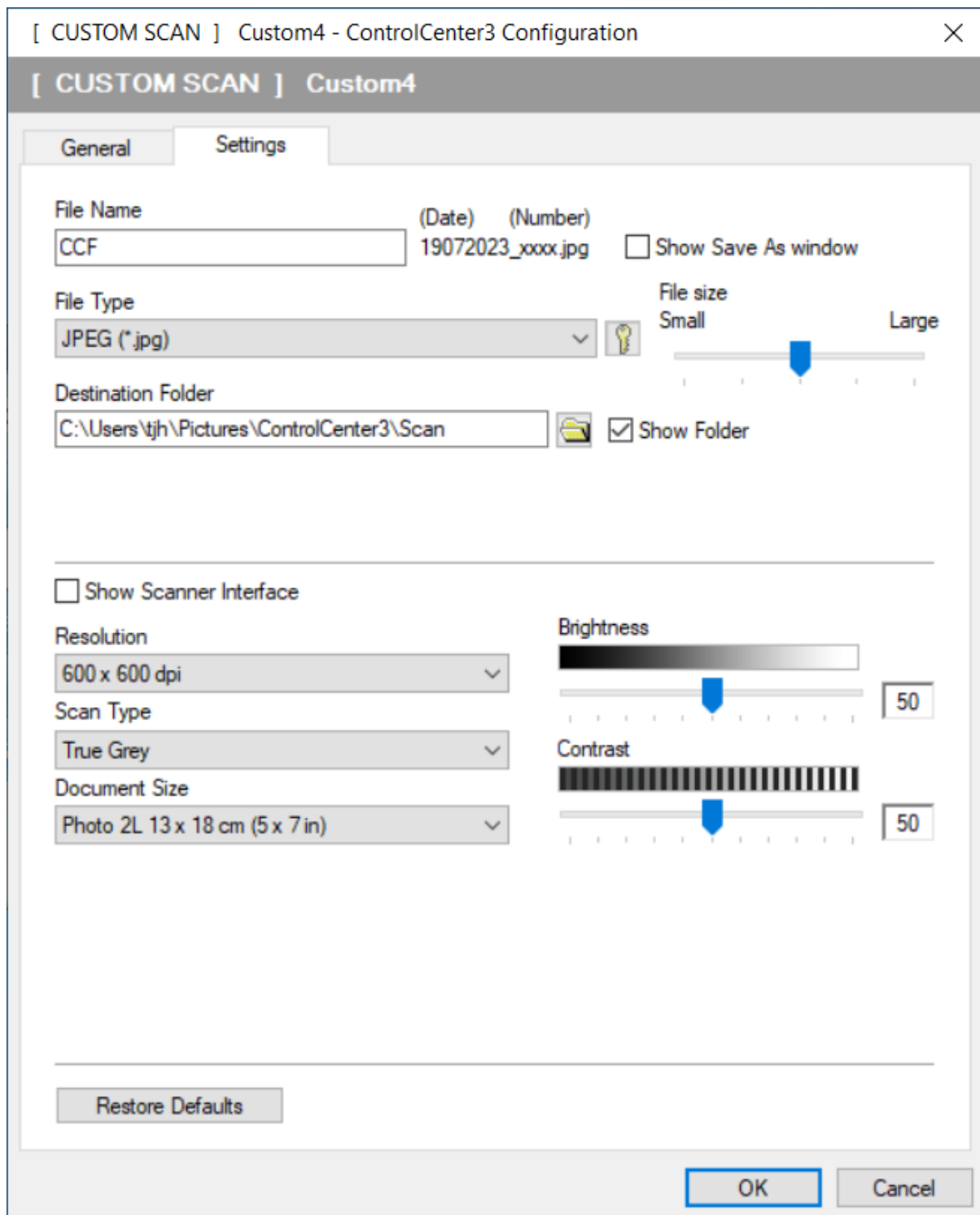
Gray (Error Diffusion)

- Use for photographic images or graphics. (Error Diffusion is a method for creating simulated gray images without using true gray dots. Black dots are put in a specific pattern to give the gray appearance.)

True Gray

- Use for photographic images or graphics. This mode is more exact because it uses up to 256 shades of gray.

https://en.wikipedia.org/wiki/Error_diffusion

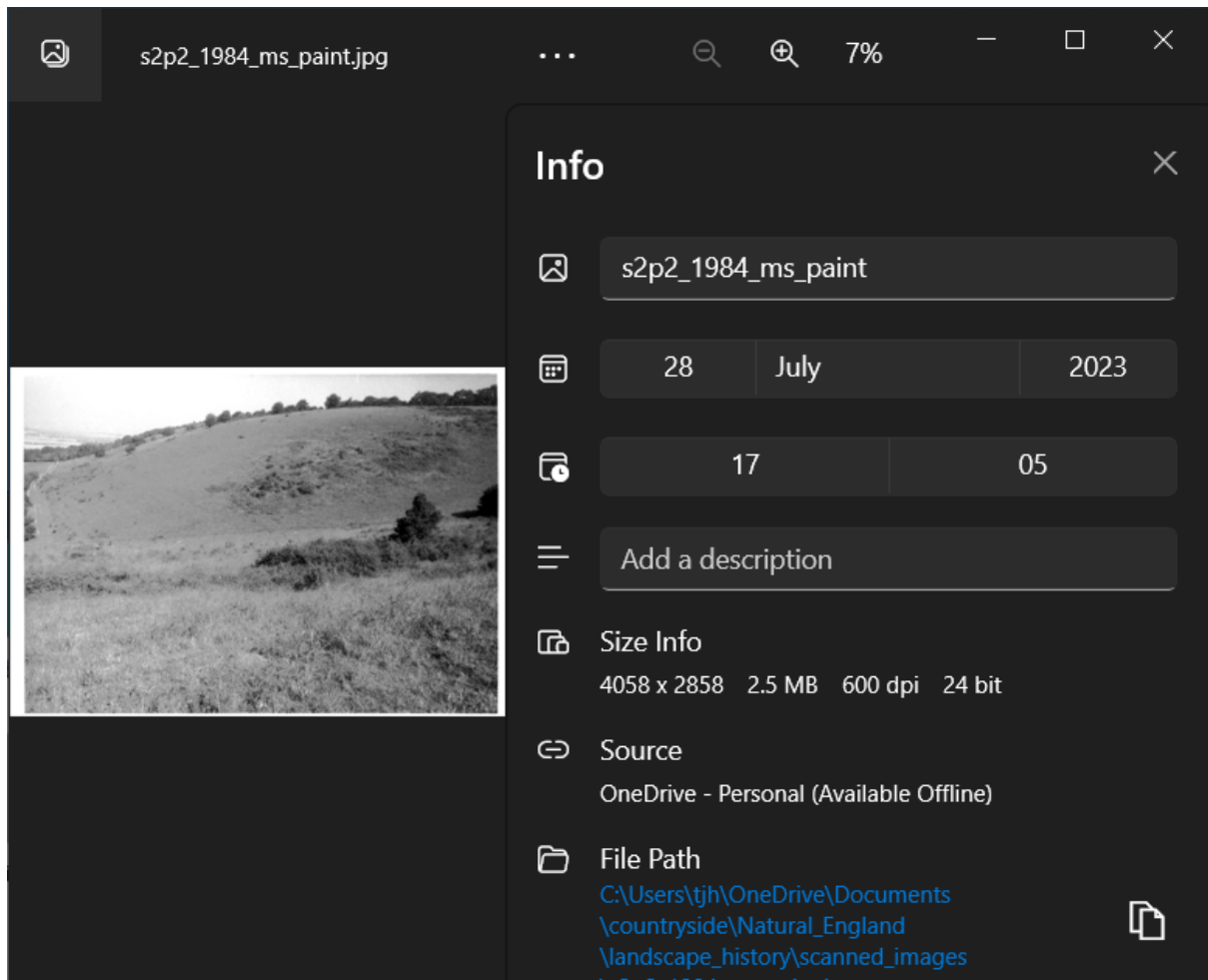


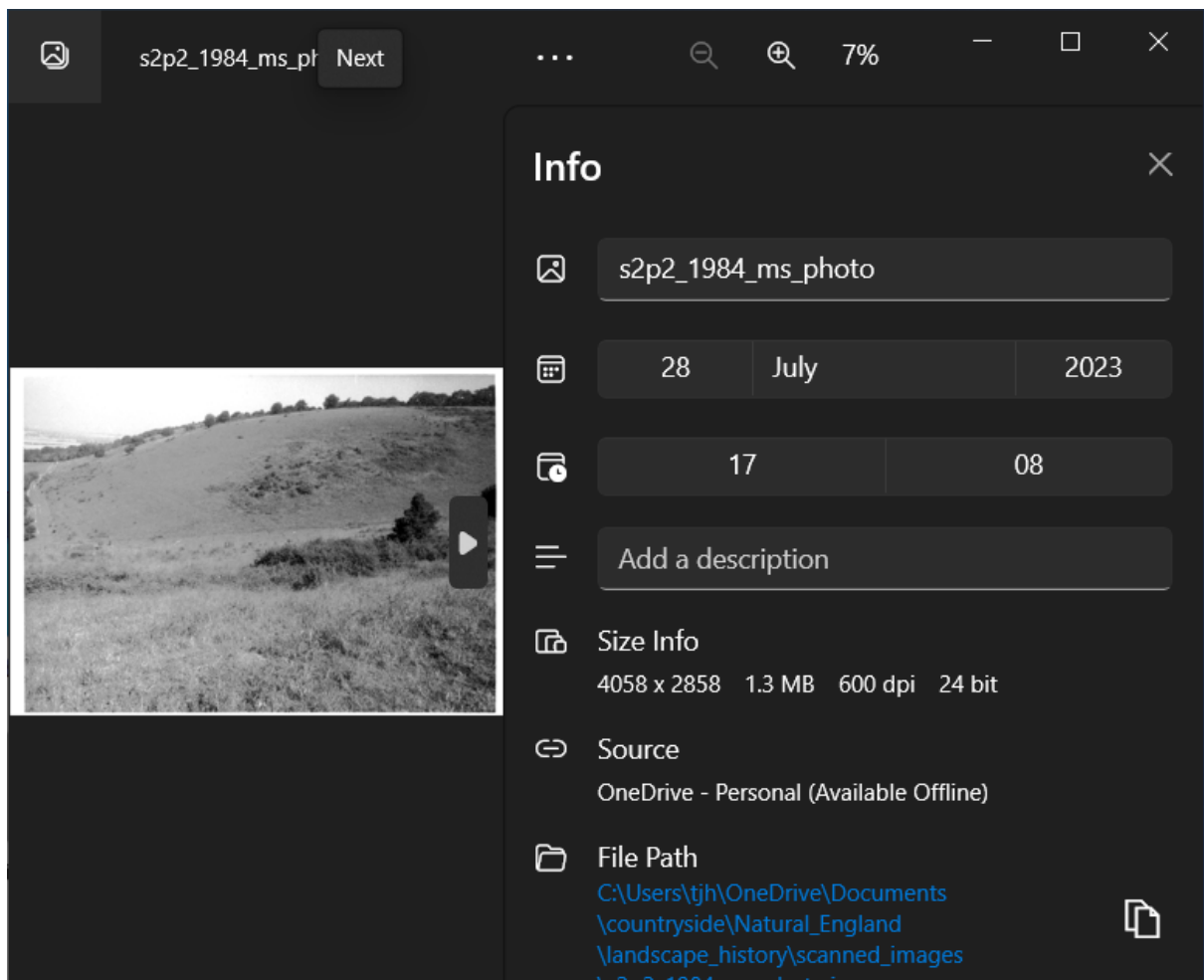
My gates photos are typically about 500K bytes.

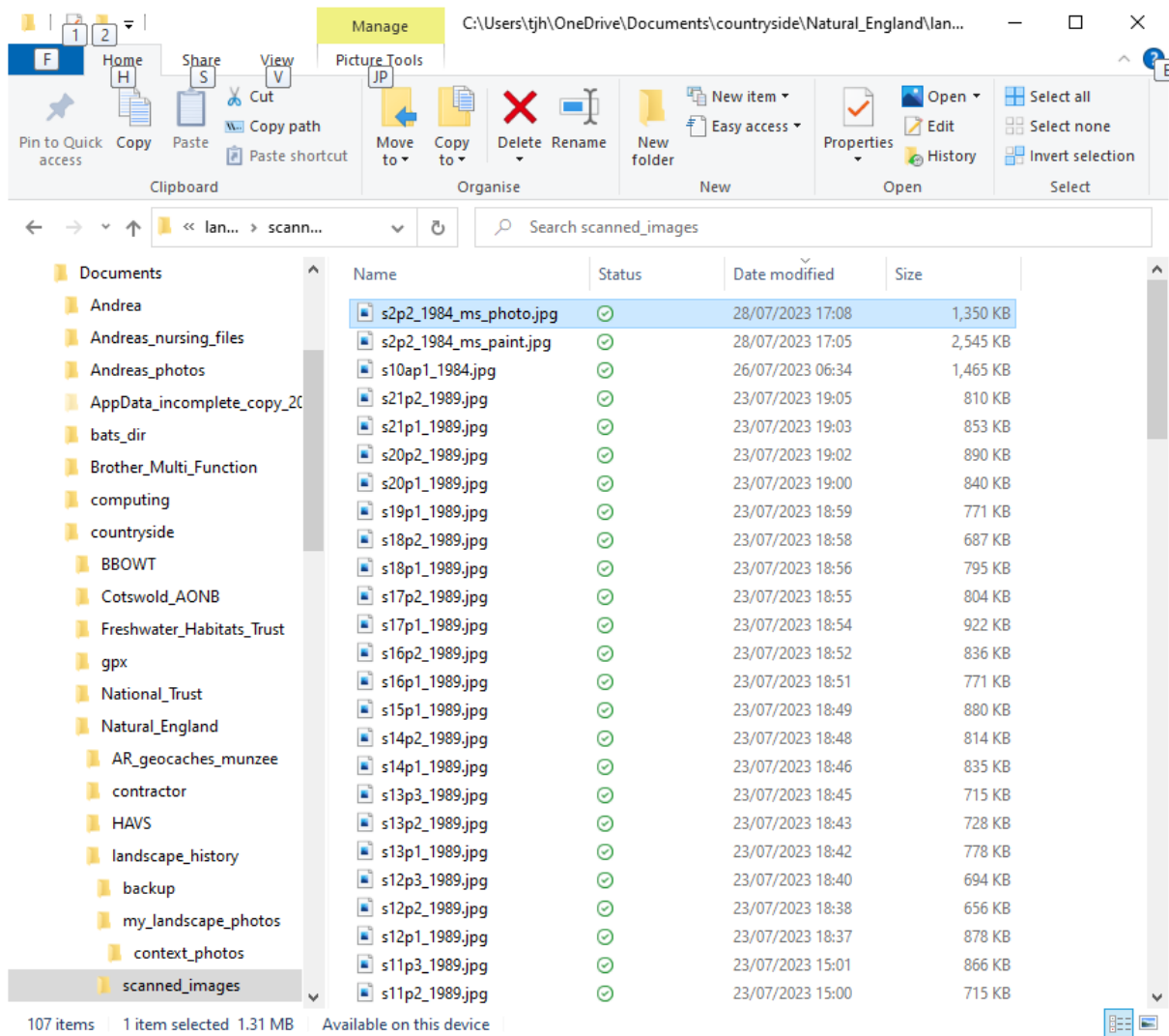
Place prints in scanner long side parallel to long side of scanner glass. Scanned image will then **need rotating** by 90 degrees clockwise.

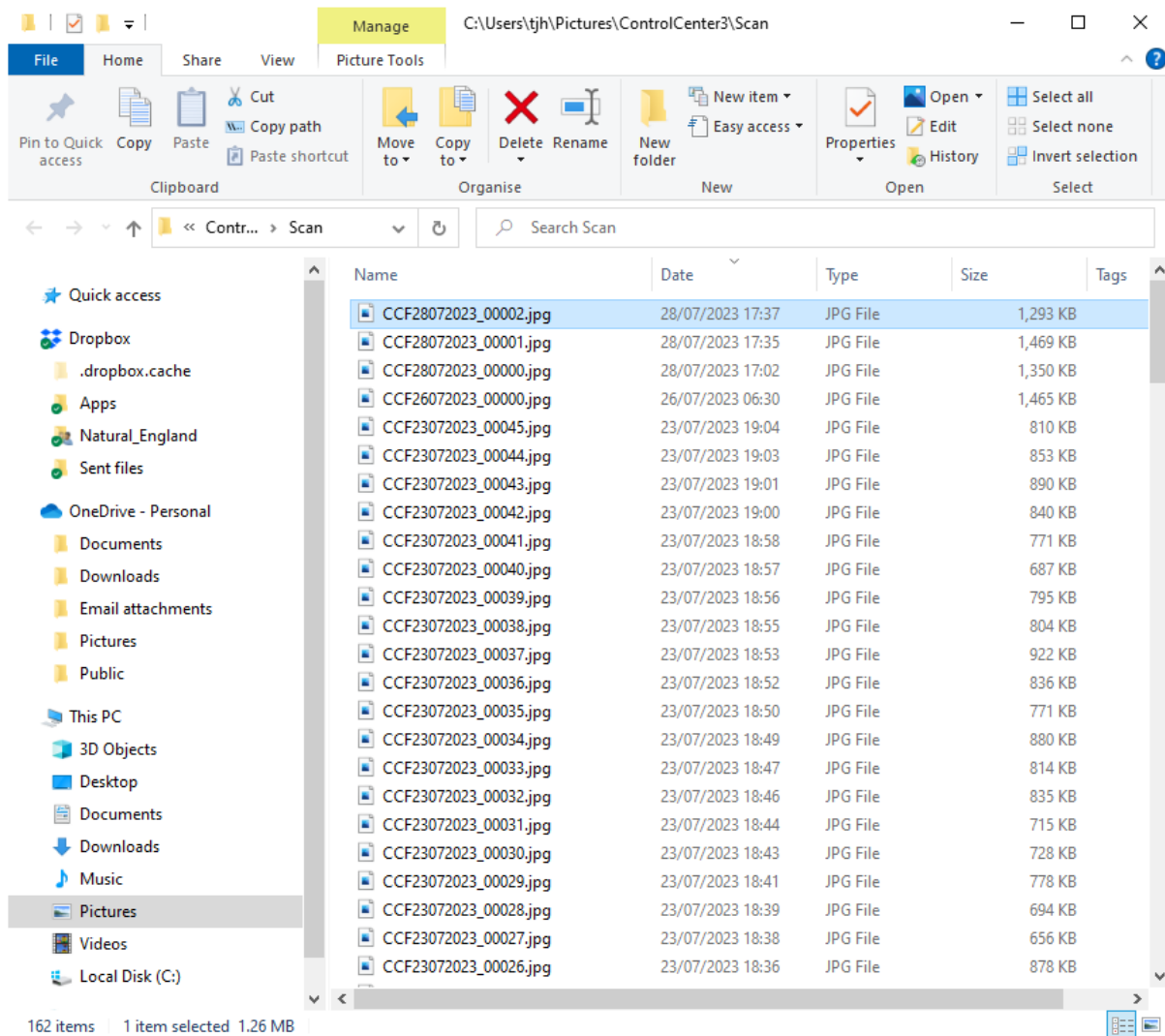
Unexplained (28-JUL-23) observation

Rotating and saving the scanned photo using **MS Photo** seems to produce a file that **is about half the size** of the same file rotated and saved using **MS Paint** !









Also, I observe, that the use of MS Paint in this way **seems to increase the size** from that of the file from the scanner.

Default file opening application may be set via :-
Settings / Apps / "Default apps" / "Photo viewer".