

prow_near_s14.docx

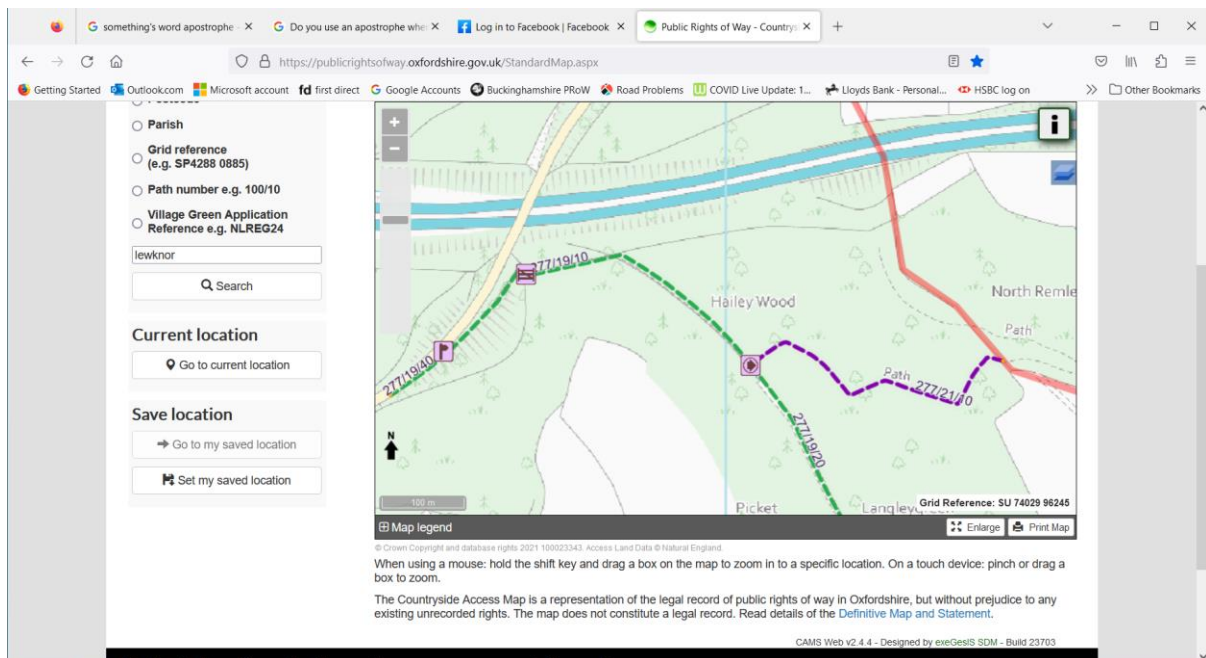
TJH 22-JUL-23

Public Rights of Way near Aston Rowant NNR photo location "s14"

"s14" is near grid 74300,96380 (What3Words slot.sharpen.nightfall)

To get to s14 using Public Rights of Way as far as possible, leave the Christmas Common Road on Lewknor (parish 277) path 19, leave that at its junction with path21. Follow path 21 to the county boundary and follow Stokenchurch (parish STC) path 1 section 2 and then turn left almost back on yourself onto section 3. After following STC/1/3 for approximately 100 m leave the PRow to navigate to "s14".

<https://publicrightsofway.oxfordshire.gov.uk/StandardMap.aspx>



<https://prow.buckscc.gov.uk/standardmap.aspx>

Getting Started | Outlook.com | Microsoft account | fd first direct | Google Accounts | Buckinghamshire ProW | Road Problems | COVID Live Update: 1... | Lloyds Bank - Personal... | HSBC log on

Log in

Search map

Select the type of search you require and enter the search term below.

- ☒ Town/Village
- ☐ Street Name
- ☐ Postcode
- ☐ Parish
- ☐ Grid Reference e.g. SP819135
- ☐ Route Code e.g. AYL271

stokenchurch

Search

Current location

Go to current location

Save location

Set my saved location

Public Rights of Way - Country: x

Public Rights of Way - Public: x

https://prow.buckscc.gov.uk/standardmap.aspx

To find a location use the Search options to locate paths, settlements or parishes. If your device has a GPS you can centre the map on your current position by pressing the 'Go to current location' button. You can use the Info tool on the map toolbar to click any feature on the map for more information.

The screenshot shows the 'Public Rights of Way' map interface. On the left, there's a search sidebar with options to search by Town/Village, Street Name, Postcode, Parish, Grid Reference, or Route Code. The search term 'stokenchurch' is entered. Below the search bar are buttons for 'Current location' and 'Save location'. The main map area displays a green landscape with a red line representing a path or road. A 'Feature Information' popup is visible, showing 'Parish: Stokenchurch'. The map includes a scale bar (100m), a north arrow, and a grid reference (SU 74301 96382). At the bottom, there's a disclaimer about Crown Copyright and a note about using a mouse or touch device to interact with the map.